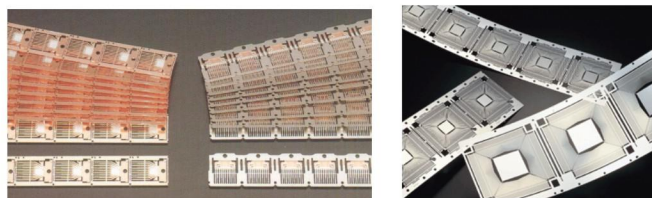


**Application: Surface treatment of lead frame, semiconductor parts and various electronic components**

**--Parts are manually loaded at entry bay and automatically conveyed into the cabinet for automatic blasting on single/both sides of the workpiece.**



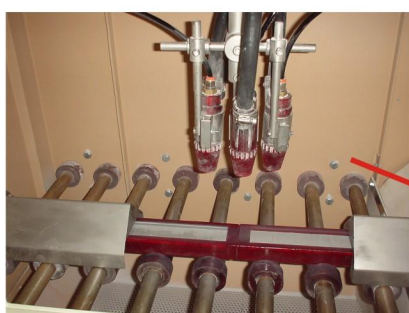
Lead frame deflashing



- 8 blast guns: 4 guns on each side of the blasting chamber to provide simultaneous surface treatment
- Airblows workpiece prior to exit to rid surface dust
- Workpiece entry is controlled via a speed inverter (1:100).



8 Guns simultaneous double side blasting



3 Guns single side blasting

### Options

- Stainless steel structure
- PLC controls for more automation flexibility
- Wet-deflashing version available

